



LORD ABBETT®

LORD ABBETT BRAND

Firm Profile

MARCH 31, 2018

Lord Abbett
90 Hudson Street
Jersey City, NJ 07302



LORD ABBETT

A singular focus since 1929

Investment-Led

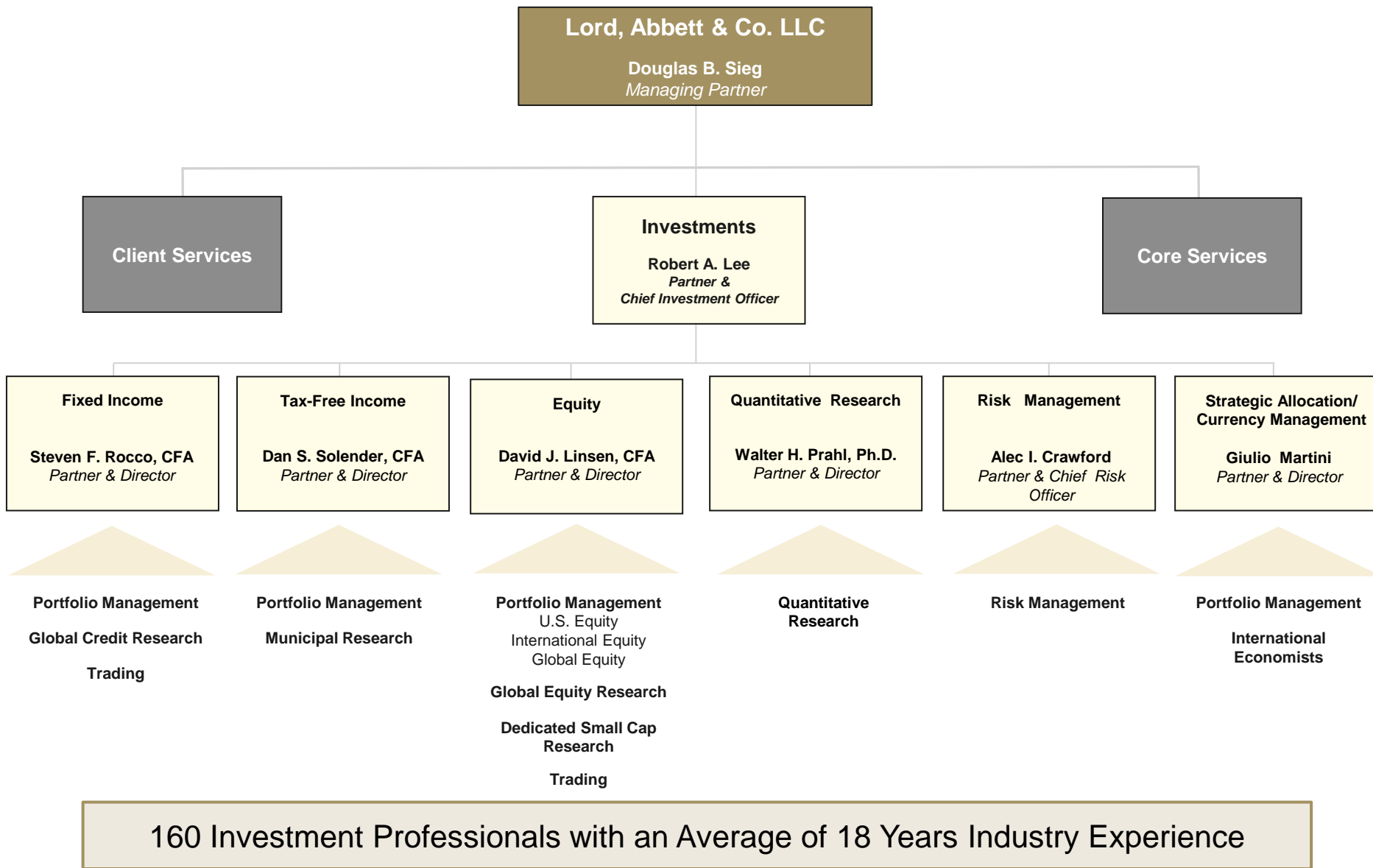
- Active management characterized by a deliberate process, teamwork, and collaboration
- Rigorous research that challenges consensus and identifies opportunities
- Comprehensive risk management that enhances investment decisions

Investor-Focused

- Perspectives shaped and decisions sharpened by our independence
- Resources dedicated to the markets we serve
- Strategies intelligently designed to meet client needs



OUR ORGANIZATIONAL STRUCTURE & INVESTMENT TEAMS





OUR ASSETS & INVESTMENT STRATEGIES

\$157.7 BILLION IN ASSETS UNDER MANAGEMENT

Including over \$800 million from current and former partners, employees and their families

U.S. Equity

- Large Value
- Mid Value
- Smid Value
- Small Value
- Micro Value
- Multi Value
- Large Core
- Small Core
- Large Growth
- Mid Growth
- Small Growth
- Micro Growth
- Dividend Growth
- Equity Income

Global & International Equity

- International Equity
- International Dividend
- International Small Core
- Global Equity

Multi-Asset

- Income
- Balanced
- Growth
- Global

Tax-Free Fixed Income

- Short
- Short Duration High Yield
- Intermediate
- Long
- High Yield
- AMT Free
- State Specific (CA, NY, NJ)

Taxable Fixed Income

- Ultra Short Bond
- Short Credit
- Intermediate Government/Credit
- Government
- Core
- Core Plus
- Inflation Focused
- Corporate Credit
- Bank Loan
- Multi-Sector
- EM Corporate Debt
- EM Currency
- Long Duration
- High Yield
- Global High Yield
- Convertible

Note: Assets under management data is as of 03/31/2018 unless noted and includes approximately \$1.6 billion for which Lord Abbett provides investment models to managed account sponsors. The information provided is not directed at any investor or category of investors and is provided solely as general information about Lord Abbett's products and services and to otherwise provide general investment education. None of the information provided should be regarded as a suggestion to engage in or refrain from any investment-related course of action as neither Lord Abbett nor its affiliates are undertaking to provide impartial investment advice, act as an impartial adviser, or give advice in a fiduciary capacity. If you are an individual retirement investor, contact your financial advisor or other fiduciary about whether any given investment idea, strategy, product or service may be appropriate for your circumstances.